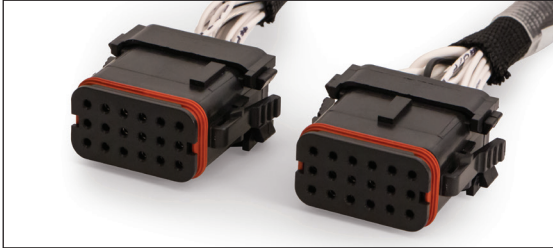




# 007-852

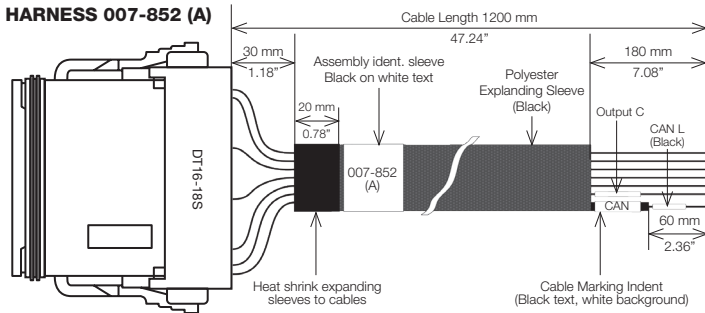
## E400 CONNECTOR HARNESS SET



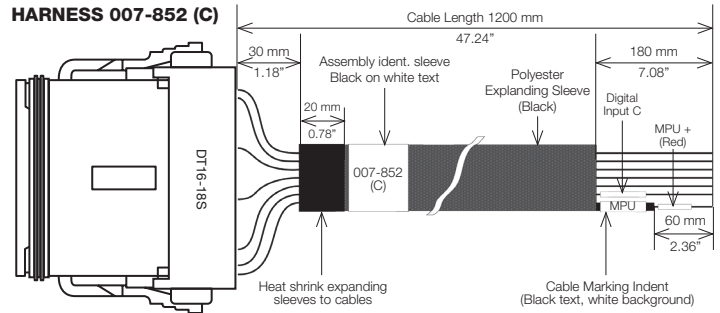
<b>DESCRIPTION</b>	Coded E400 connectors pre-wired with 1.2 m cable 3 ft 11"
<b>MATERIAL</b>	Connectors: Plastic PUR
<b>COLOUR</b>	Connectors: Black Cable: Black with white core numbering
<b>PROTECTION</b>	IP67 NEMA 6
<b>WEIGHT</b>	0.5 kg 1 lb 2 oz

**WIRING:**

**HARNESS 007-852 (A)**



**HARNESS 007-852 (C)**



PIN	CRIMP	SIZE (MM <sup>2</sup> )	SIZE (AWG)	CABLE INDENT.	INFORMATION
1	0462-201-16	0.823 mm <sup>2</sup>	18 AWG	Output C	
2	0462-201-16	0.823 mm <sup>2</sup>	18 AWG	Output D	
3	0462-209-16	2.08 mm <sup>2</sup>	14 AWG	E-Stop	
4	0462-201-16	0.823 mm <sup>2</sup>	18 AWG	Output A	
5	0462-201-16	0.823 mm <sup>2</sup>	18 AWG	Output B	
6	0462-201-16	0.518 mm <sup>2</sup>	20 AWG	Digital Input A	
7	0462-201-16	0.823 mm <sup>2</sup>	18 AWG	Plant Supply +ve	Twisted Pair Pins 7, 13
8	0462-201-16	0.518 mm <sup>2</sup>	20 AWG	CAN Screen	Screened Cable 1
9	0462-201-16	0.518 mm <sup>2</sup>	20 AWG	CAN L	Screened Cable 1
10	0462-201-16	0.518 mm <sup>2</sup>	20 AWG	CAN H	Screened Cable 1
11	0462-201-16	0.518 mm <sup>2</sup>	20 AWG	Flex Sender Comm	
12	0462-201-16	0.518 mm <sup>2</sup>	20 AWG	Digital Input B	
13	0462-201-16	0.823 mm <sup>2</sup>	18 AWG	Plant Supply -ve	Twisted Pair Pins 13, 7
14	0462-201-16	0.518 mm <sup>2</sup>	20 AWG	Charge Fail	
15	0462-201-16	0.518 mm <sup>2</sup>	20 AWG	Flex Sender D	
16	0462-201-16	0.518 mm <sup>2</sup>	20 AWG	Flex Sender C	
17	0462-201-16	0.518 mm <sup>2</sup>	20 AWG	Flex Sender B	
18	0462-201-16	0.518 mm <sup>2</sup>	20 AWG	Flex Sender A	

PIN	CRIMP	SIZE (MM <sup>2</sup> )	SIZE (AWG)	CABLE INDENT.	INFORMATION
1	0462-201-16	0.518 mm <sup>2</sup>	20 AWG	Gov B	Twisted Pair Pins 1, 7
2	0462-201-16	0.518 mm <sup>2</sup>	20 AWG	RS485 A	Screened Cable 2
3	0462-201-16	0.518 mm <sup>2</sup>	20 AWG	RS485 Screen	Screen Cable 2
4	0462-201-16	0.518 mm <sup>2</sup>	20 AWG	Flex Sender Comm	
5	0462-201-16	0.518 mm <sup>2</sup>	20 AWG	Flex Sender E	
6	0462-201-16	0.518 mm <sup>2</sup>	20 AWG	Flex Sender F	
7	0462-201-16	0.518 mm <sup>2</sup>	20 AWG	Gov A	Twisted Pair Pins 7, 1
8	0462-201-16	0.518 mm <sup>2</sup>	20 AWG	RS485 B	Screened Cable 2
9	0462-201-16	0.518 mm <sup>2</sup>	20 AWG	MPU+	Screened Cable 3
10	0462-201-16	0.518 mm <sup>2</sup>	20 AWG	MPU-	Screened Cable 3
11	0462-201-16	0.518 mm <sup>2</sup>	20 AWG	MPU Screen	Screened Cable 3
12	0462-201-16	0.518 mm <sup>2</sup>	20 AWG	Flex Sender G	
13	0462-201-16	2.08 mm <sup>2</sup>	14 AWG	PWMI Supply -ve	Twisted Pair Pins 13, 14
14	0462-209-16	2.08 mm <sup>2</sup>	14 AWG	PWMI Supply +ve	Twisted Pair Pins 14, 13
15	0462-201-16	0.823 mm <sup>2</sup>	18 AWG	PWMI Output F	
16	0462-201-16	0.823 mm <sup>2</sup>	18 AWG	PWMI Output E	
17	0462-201-16	0.518 mm <sup>2</sup>	20 AWG	Digital Input D	
18	0462-201-16	0.518 mm <sup>2</sup>	20 AWG	Digital Input C	



**DEEP SEA ELECTRONICS PLC UK**  
 Highfield House, Hunmanby Industrial Estate, Hunmanby YO14 0PH  
**TELEPHONE** +44 (0) 1723 890099 **FACSIMILE** +44 (0) 1723 893303  
**EMAIL** sales@deepseapl.com **WEBSITE** www.deepseapl.com

**DEEP SEA ELECTRONICS INC USA**  
 3230 Williams Avenue, Rockford, IL 61101-2668 USA  
**TELEPHONE** +1 (815) 316 8706 **FACSIMILE** +1 (815) 316 8708  
**EMAIL** sales@deepseausa.com **WEBSITE** www.deepseausa.com

Deep Sea Electronics Plc maintains a policy of continuous development and reserves the right to change the details shown on this data sheet without prior notice. The contents are intended for guidance only

Registered in England & Wales No.01319649  
 VAT No.316923457