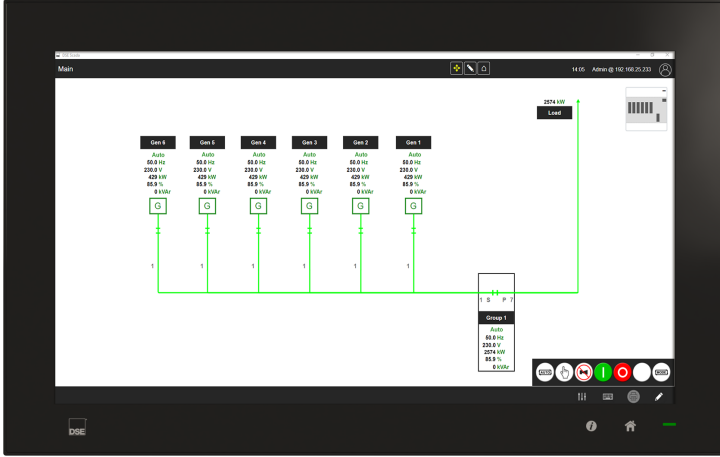


## DSEG8015 15.6" Panel PC with DSE SCADA

Part Number: G8015-01



G8015

### Hardware

The G8015 is a Windows based panel PC running DSE SCADA software and is designed for use with the G8 Series paralleling controller platform. The panel PC offers a 1920 x 1080 LED backlit capacitive touchscreen display. When mounted, the unit offers IP66 protection, and the powerful Intel processor ensures smooth operation. The unit is connected to DSE G8 Series controllers via Ethernet.

### Software

DSE SCADA is a secure software platform that provides advanced multi-set monitoring & commissioning functionality for G8 Series Controllers. The stand-alone software is pre-loaded onto each device, which includes a full software license. The software can be configured to connect with individual / multiple generators on the same site. Users can gain a full system overview from any remote location with an Internet connection. The software provides multi-set commissioning functionality, which allows users to commission multiple generators.

### Key Features

- Powerful Intel® Atom® processor
- 4 GB SDRAM
- Multi-touch capacitive display
- 1 x Ethernet, 2 x USB 3.0, 1 x USB 2.0
- IP66 front panel protection
- Line out - Audio system connection
- Panel mount
- Windows 10 IoT Enterprise
- 2.5" SATA Solid State Drive
- System status LED indicators
- Wi-Fi hotspot capability
- Option to design as server/client configuration  
(See diagram on page 3)

### Key Applications



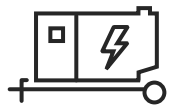
Hospitals



Industrial



Data Centers



Rental



Telecoms



Hybrid



## DSEG8015

### 15.6" Panel PC with DSE SCADA

Part Number: G8015-01

Specifications	
<b>DC Supply</b>	
Continuous Voltage Rating	24 V DC $\pm$ 20 %
<b>Interfaces</b>	
Rear I/O	1 x Ethernet, 2 x USB 3.0, 1 x USB 2.0,
<b>System</b>	
CPU	Intel Atom E3940 1.6 GHz
Memory	4 GB DDR3L SDRAM
Storage Device	1 x 2.5" SATA Solid State Drive
Expansion	N/A
<b>LCD Display Specification</b>	
LCD Panel	FHD TFT LED LCD
Resolution	1920 x 1080
Luminance	450 cd/m <sup>2</sup>
Contrast Ratio	800:1
Viewing Angle	170°/170°
Backlight	LED
Backlight Life	50,000 hours
<b>Touchscreen</b>	
Type	PCAP
Light Transmission	90% $\pm$ 3%
Anti-Glare Treatment	Yes
<b>Mechanical</b>	
Housing	IP66 (front)
Mounting	Panel mount
Weight	8.12 Kg
Dimensions	419.7 mm x 269 mm x 60 mm
Panel Cutout	412.4 mm x 261.7 mm
<b>Operating System</b>	
OS	Windows 10 IoT Enterprise LTSP / LTSC
<b>Operating Conditions</b>	
Operating Temperature	-20° C - 60° C
Storage Temperature	-20° C - 60° C

## DSEG8015

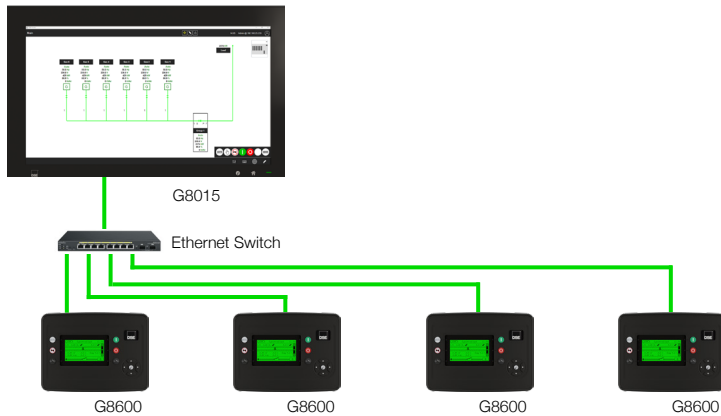
### 15.6" Panel PC with DSE SCADA

Part Number: G8015-01

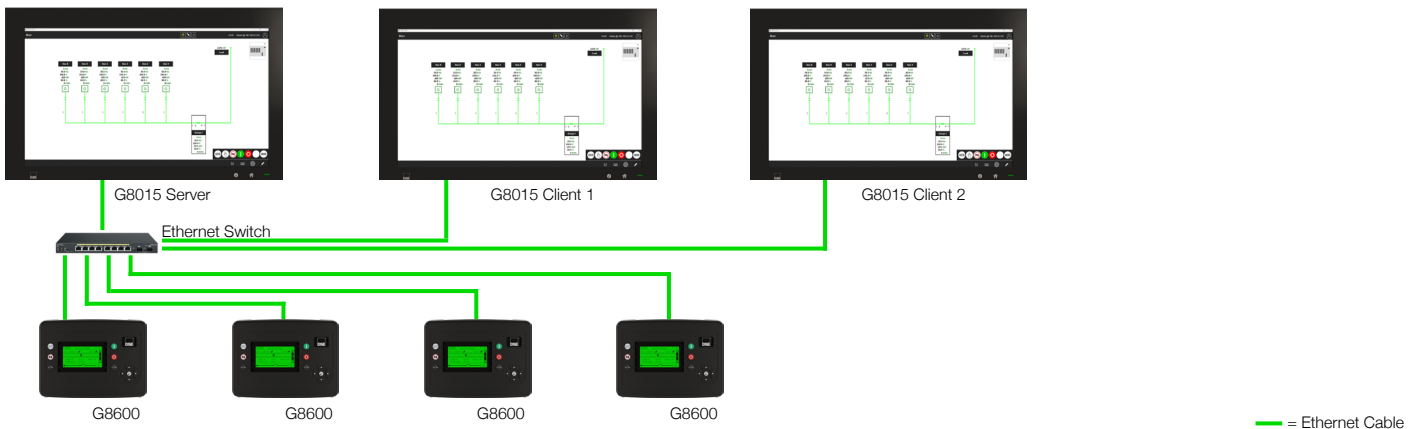
Related Products		
<b>Controllers Compatible with DSE SCADA</b>		
G8600	Parallel Genset Controller with Integral Heater	G8600-01
G8660	ATS / Mains (Utility) Controller	G8660-01
G8680	Bus Tie Controller	G8680-01
<b>Expansion Devices Compatible with DSE SCADA</b>		
DSE2130	DSENet® Input Expansion Module	2130-01
DSE2131	DSENet® Ratiometric Input Expansion Module	2131-01
DSE2133	DSENet® RTD/Thermocouple Input Expansion Module	2133-01
DSE2152	DSENet® Analogue Output Expansion Module	2152-01
DSE2157	DSENet® Output Expansion Module	2157-01
DSE2548	DSENet® LED Output Expansion Module	2548-01
<b>Battery Chargers</b>		
DSE9470 MKII	24 Volt 10 Amp Intelligent Battery Charger	9470-01

#### Typical Application Examples

##### Single Panel PC Configuration



##### Server / Client Panel PC Configuration



**DEEP SEA ELECTRONICS UK**  
 T: +44 (0) 1723 890099  
 E: sales@deepseaelectronics.com  
 W: www.deepseaelectronics.com

**DEEP SEA ELECTRONICS USA**  
 T: +1 (815) 316 8706  
 E: usasales@deepseaelectronics.com  
 W: www.deepseaelectronics.com

**DEEP SEA ELECTRONICS UAE**  
 T: +971 (0) 45910819  
 E: uaesales@deepseaelectronics.com  
 W: www.deepseaelectronics.com

**DEEP SEA ELECTRONICS INDIA**  
 T: +91 20 68195900  
 E: sales@deepseaelectronics.com  
 W: www.deepseaelectronics.com

**DSEG8015**  
15.6" Panel PC with DSE SCADA

Part Number: G8015-01

**Technical Drawings**

**G8015**

