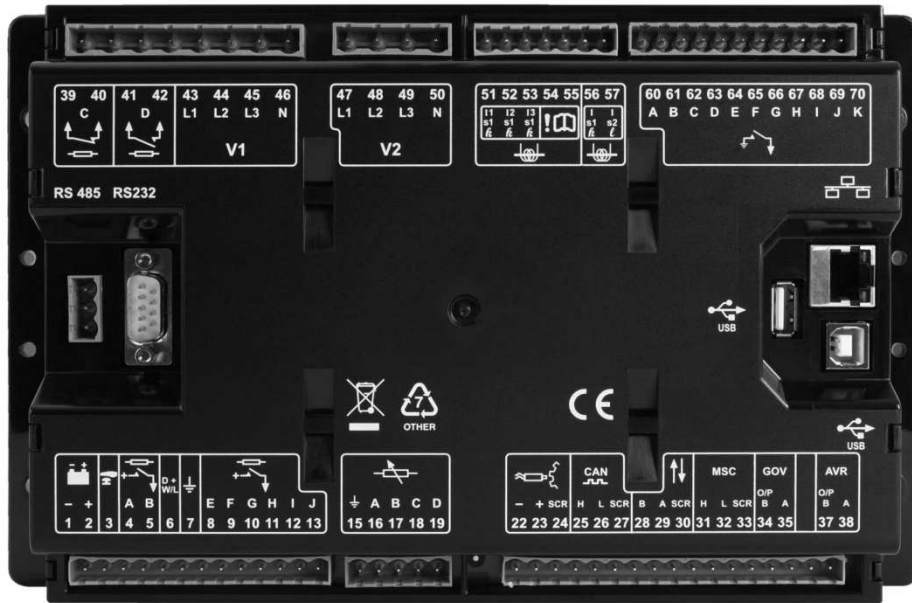




DEEP SEA ELECTRONICS

# 8700 INSTALLATION INSTRUCTIONS



**NOTE:** The 8700 base module is supplied configured as an “Autostart” module (8710) When a change is required to an AMF (8720) or Mains controller (8760) then go to Configuration Suite (tools menu) then upgrade firmware and follow the wizard.

**NOTE:** A display module must be purchased separately .  
Colour (8721) and mono versions are available. (8711) (8712) (8716)

**NOTE:** USB and Ethernet sockets are reserved for future use. They are currently fitted to the controller but not used. User applicable firmware update file will be made available in the future to activate these ports.

**NOTE:** More comprehensive module configuration is possible using the DSE configuration suite software. Please contact us for further details.

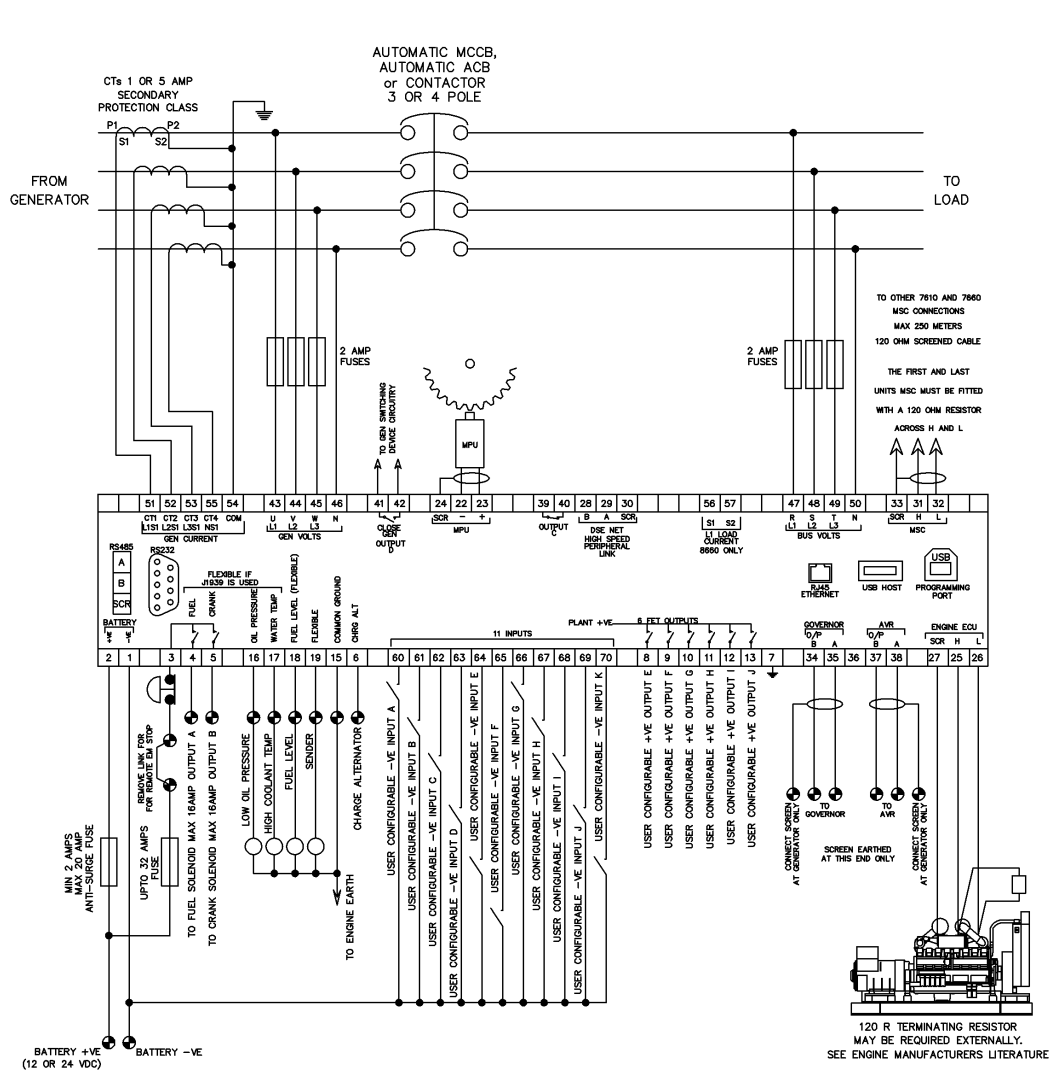
<p>Deep Sea Electronics Plc Tel:+44 (0)1723 890099 Fax: +44 (0)1723 893303 LO CALL (from UK BT landlines) : Telephone 0845 260 8933 Email: support@deepseapl.com Web: www.deepseapl.com</p>	<p>Deep Sea Electronics inc Phone: +1 (815) 316-8706 Fax: +1 (815) 316- 8708 TOLL FREE (USA only) Tel: 1 866 636 9703 Email: dsesales@deepseausa.com Web: www.deepseausa.com</p>
---	--

**DIMENSIONS**  
240.0mm x 181.1mm x 41.7mm (9.4” x 7.1” x 1.6”)



Example of DSE8721 colour display

**TYPICAL WIRING DIAGRAM (8710)**



**TYPICAL WIRING DIAGRAM (8760)**

