



This instruction sheet is for DSE4410Mk2 controllers only. For DSE4410 Mk1 controllers use DSE publication 053-056

ACCESSING THE FRONT PANEL CONFIGURATION EDITOR

Ensure the engine is at rest and the module is in STOP mode by

pressing the Stop/Reset button.

Press the Stop/Reset and Down buttons simultaneously.

The configuration icon is displayed, along with the first configurable parameter.

EDITING A PARAMETER

Press to select the required 'page' as detailed in the configuration tables.

Press (+) to select the next parameter or (-) to select the previous parameter within the current page.

When viewing the parameter to be changed, press the button. The value begins to flash.

Press (+) or (-) to adjust the value to the required setting.

Press the save the current value, the value ceases flashing.

Press and hold the button to exit the editor, the configuration icon will be removed from the display.

NOTE: - Pressing and holding the + / - buttons will give auto-repeat functionality. Large values can be changed quicker by holding the buttons for a prolonged period. For instance large timers increment in 1 second steps to 1 minute, then in 30 second steps to 1 hour, then in 30 minute steps.

DIMENSIONS

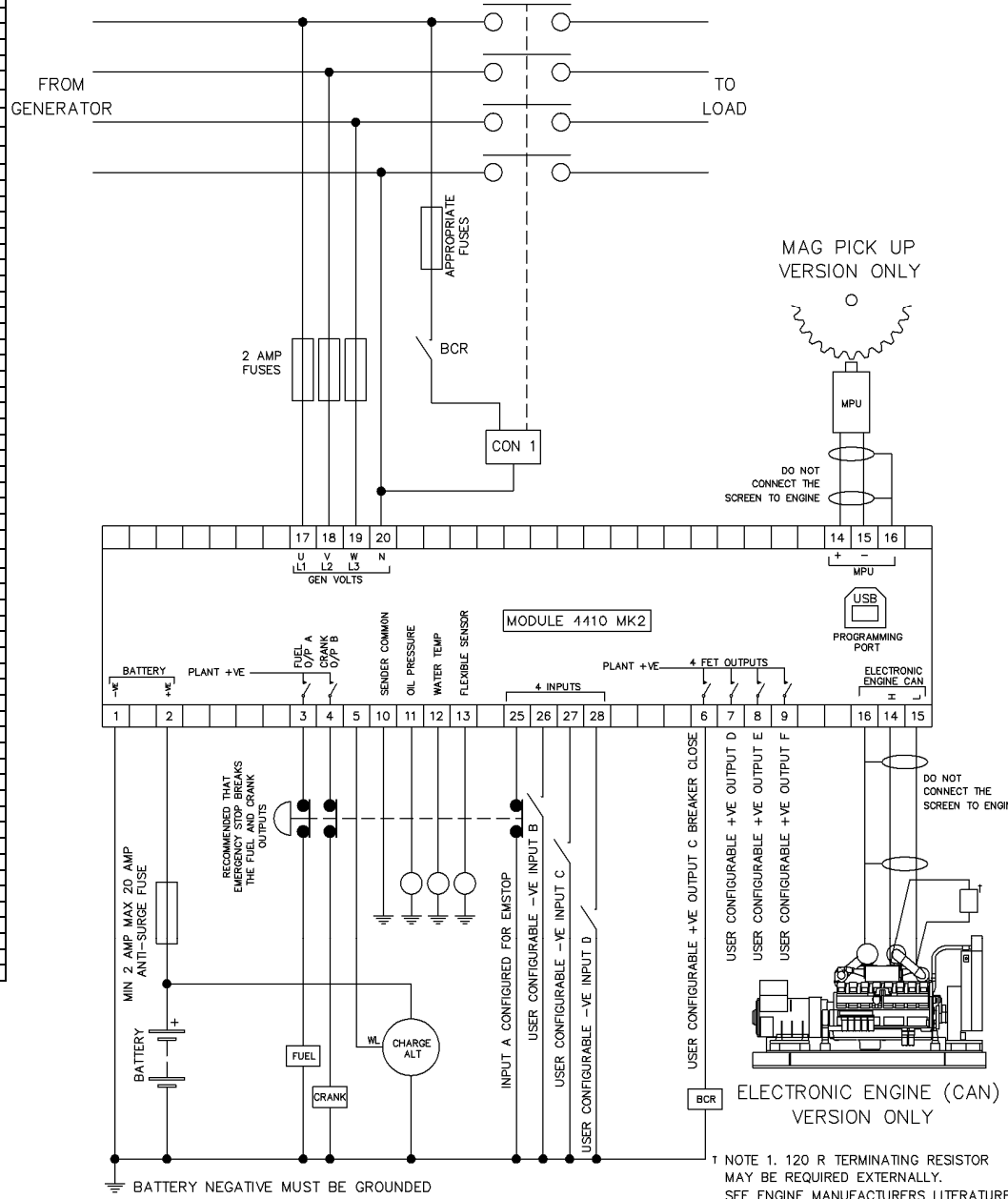
180mm x 116mm x 42mm (7.1" x 4.6" x 1.7")

PANEL CUTOUT

154mm x 98mm (6" x 3.9")

<p>Deep Sea Electronics Plc. Tel: +44 (0)1723 890099 Fax: +44 (0)1723 893303 Email: support@deepseapl.com Web: www.deepseapl.com</p>	<p>Deep Sea Electronics inc. Phone: +1 (815) 316-8706 Fax: +1 (815) 316-8708 TOLL FREE (USA only) : Tel: 1 866 636 9703 Email: support@deepseausa.com Web: www.deepseausa.com</p>
---	--

TYPICAL WIRING DIAGRAM



OUTPUT SOURCE LIST		
0	Not used	
1	RESERVED	
2	RESERVED	
3	Audible Alarm	
4	Battery over volts warning	
5	Battery under volts warning	
6	CAN ECU data fail	CAN J48
7	CAN ECU error	CAN J48
8	CAN ECU fail	CAN J48
9	CAN ECU power	CAN J48
10	CAN ECU stop	CAN J48
11	Charge alternator shutdown	
12	Charge alternator warning	
13	Close Gen output	
14	Close Gen output pulse	
15	Close Mains output	
16	Close Mains output pulse	
17	Combined mains failure	
18	Common Alarm	
19	RESERVED	
20	Common Shutdown	
21	Common Warning	
22	RESERVED	
23	RESERVED	
24	RESERVED	
25	RESERVED	
26	RESERVED	
27	RESERVED	
28	RESERVED	
29	Emergency stop	
30	Energise to stop	
31	RESERVED	
32	RESERVED	
33	Fuel relay	
34	Gas choke on	
35	Gas ignition	
36	Generator Available	
37	RESERVED	
38	RESERVED	
39	RESERVED	
40	RESERVED	
41	Low fuel level	
42	RESERVED	
43	RESERVED	
44	RESERVED	
45	RESERVED	
46	RESERVED	
47	Open Gen Output	
48	Open Gen Output pulse	
49	RESERVED	
50	RESERVED	
51	RESERVED	
52	RESERVED	
53	Preheat During Preheat Timer	
54	Preheat Until End of Crank	
55	Preheat Until End of Safety Timer	
56	Preheat Until End of Warming Timer	
57	Smoke limiting	
58	Start relay	
59	RESERVED	
60	RESERVED	
61	RESERVED	

44xx - 02 (CAN option) only
 44xx - 01 (Magnetic pickup option) only



TERMINALS SUITABLE FOR 22-16 AWG (0.6mm - 1.3mm) FIELD WIRING
 TIGHTENING TORQUE = 0.8Nm (7lb-in)