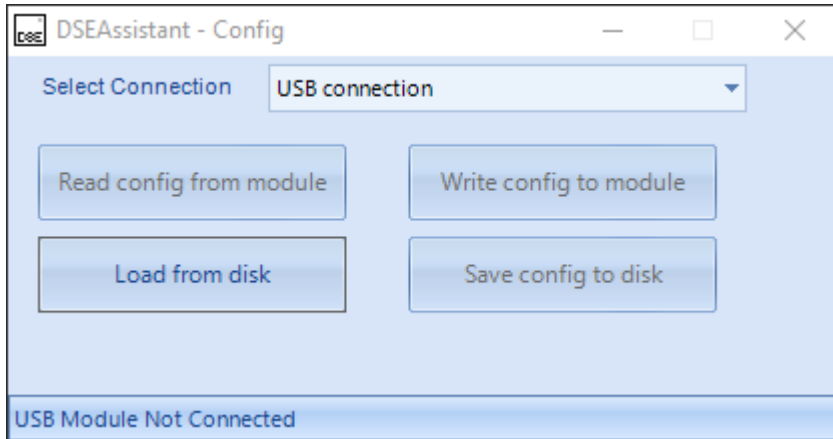


# DSE Assistant

Upload Individual Configuration Files  
to Multiple DSE Control Modules



DSE Assistant is an intelligent software tool that allows a single configuration file to be uploaded to multiple DSE control modules in mass production factory environments. Users have the ability to create a file that contains the config, firmware and language file. This file is then added to DSE Assistant. Once the file is ready, the user simply connects a control module to their laptop/PC using a USB A to USB B cable and uploads the file (DSE813/DSE815 required with relevant DSE products). This process should be repeated with all additional modules as required. Configuration files can be saved and re-used for future use. DSE Assistant can also be used to read and save files from within a control module.

Using DSE Assistant helps to reduce configuration errors during the manufacturing process that could result in unwanted safety implications.

## Key Features:

- Easy to install and use
- Import, export and save configuration files
- Simplifies module programming in mass production environments
- Prevents configuration file errors
- Works with 32-bit and 64-bit Windows operating systems.



**DSE815**  
AVR USB to RS485 Converter  
Required with relevant DSE AVR products.

**DSE813**  
PC Software Configuration Interface  
Only required with DSE103 MKII, DSE701 MKII and DSE402 MKII.

## Related Materials

DSE Assistant PC Software Manual

## Part No.

057-312

## DEEP SEA ELECTRONICS LTD

Highfield House, Hunmanby Industrial Estate, Hunmanby YO14 0PH  
**TELEPHONE** +44 (0) 1723 890099 **FACSIMILE** +44 (0) 1723 893303  
**EMAIL** sales@deepseaelectronics.com **WEBSITE** www.deepseaelectronics.com

## DEEP SEA ELECTRONICS INC

3230 Williams Avenue, Rockford, IL 61101-2668 USA  
**TELEPHONE** +1 (815) 316 8706 **FACSIMILE** +1 (815) 316 8708  
**EMAIL** usasales@deepseaelectronics.com **WEBSITE** www.deepseaelectronics.com